



# Axelent X-Store

SECURE, SMART MESH PANELS FOR INDUSTRIAL AND WAREHOUSE APPLICATIONS

# X-Store second generation secures your warehouse

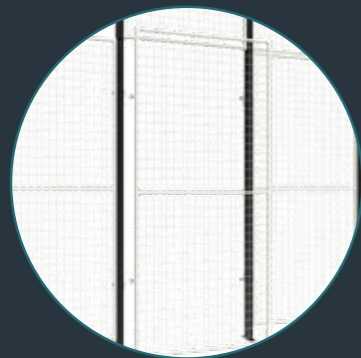
The X-Store system is designed to give you easy and secure access to your warehouse. The second generation offers a number of benefits and improvements. This includes a dedicated ceiling solution, easy independent removal of adjacent panels and a single post that can be used in three different directions - including corners!

## Benefits of X-Store

- ✔ New **fast and unique way to attach panels** to posts
- ✔ **Wide range of locks and doors** (based on the same system that is used for X-Guard)
- ✔ **Remove a panel without affecting** the adjacent panels
- ✔ **Build right up to the ceiling**
- ✔ Available in **SnapperWorks**
- ✔ **Modular concept** – custom height and width
- ✔ New **floor fitting design – combine with posts** of standard height for **cost efficiency**
- ✔ **Flexible posts** – build in 3 different directions, including corners
- ✔ **Easily adjust the height** of each panel individually
- ✔ **New joint** for easier and stronger vertical constructions
- ✔ **Clearly marked entrances and exits** with different wall and door panel colours
- ✔ **Made-to-measure installations** with cutting kits and adjustable panel inserts
- ✔ **Ceiling in unlimited length**, max. width 6 m



Draw your X-Store system in Axelent's drawing program SnapperWorks for free! Click and drag features. With 3D view. The drawing works as an order basis.



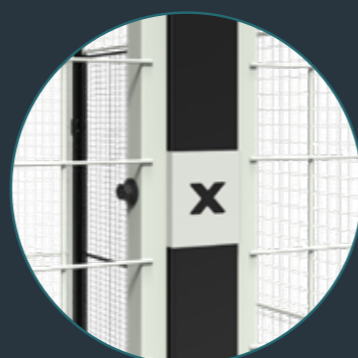
### Smooth removal

Remove/move a panel without affecting the adjacent panels.



### Modular concept

X-Store grows with you – in both height and width.



### Unique attachment

Attach panels to posts quickly and with great results.



### New strong joint

Building higher panel walls are easy.



### Marked passage

Show the way with colour. The door panel is black while the mesh walls are grey.



### Flexible posts

Build in 3 different directions, including corners.



# X-Store

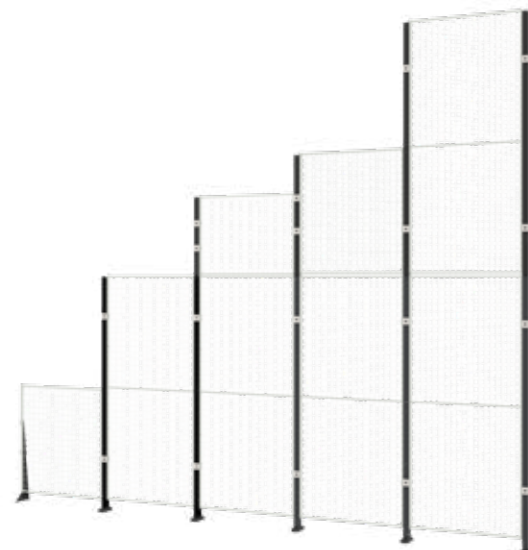
## industry and warehouse system

### EASILY ADAPTABLE

The X-Store sections are available in two heights and several widths. Using feet, posts and extensions you can tailor the panels to suit your needs. We offer a cutting service to ensure your panels are perfectly dimensioned, horizontally and vertically.

### COMBINE WITH A DOOR PACKAGE

It is also possible to combine X-Store with one of our door packages. If you want a special colour to fit in with the rest of your decor we can naturally fix that as well. Everything is delivered plastic-wrapped on our customised pallets straight from Hillerstorp.



### PRODUCT FACTS X-STORE

Vertical tubing mesh	19x19 mm
Horizontal tubing mesh	15x15 mm
Vertical wires	Ø 3 mm
Horizontal wires	Ø 2,5 mm
Mesh aperture	60x50 mm
Plastic sheet	2 mm (thermoplastic polyester)
Metal sheet	0,7 mm
Posts	50x50 mm, 70x70 mm or floor fitting
Gap to floor distance*	100 mm
Coating	Phosphate/Epoxy paint
Colour, mesh panel	Papyrus White RAL 9018
Colour, door	Graphite Black RAL 9011
Colour, post	Graphite Black RAL 9011

(Other colours can be quoted)

\* Coverstrip to close the gap is available as an option

## Product Facts » X-Store

### MESH PANEL (Height 2200 mm)

Art.no	Height (mm)	Width (mm)
--------	-------------	------------

Papyrus White RAL 9018

413-220025	2200	0250
413-220040	2200	0400
413-220080	2200	0800
413-220100	2200	1000
413-220120	2200	1200
413-220150	2200	1500

### SHEET METAL PANEL (Height 2200 mm)

Art.no	Height (mm)	Width (mm)
--------	-------------	------------

Graphite black RAL 9011

349-220025	2200	0250
349-220040	2200	0400
349-220080	2200	0800
349-220100	2200	1000

### MESH PANEL (Height 1100 mm)

Art.no	Height (mm)	Width (mm)
--------	-------------	------------

Papyrus White RAL 9018

413-110025	1100	0250
413-110040	1100	0400
413-110080	1100	0800
413-110100	1100	1000
413-110120	1100	1200
413-110150	1100	1500

### SHEET METAL PANEL (Height 1100 mm)

Art.no	Height (mm)	Width (mm)
--------	-------------	------------

Graphite black RAL 9011

349-110025	1100	0250
349-110040	1100	0400
349-110080	1100	0800
349-110100	1100	1000

### MESH PANEL (Height 750 mm)

Art.no	Height (mm)	Width (mm)
--------	-------------	------------

Papyrus White RAL 9018

413-075025	750	0250
413-075040	750	0400
413-075080	750	0800
413-075100	750	1000
413-075120	750	1200
413-075150	750	1500

### PLASTIC PANEL (Height 2200 mm)

Art.no	Height (mm)	Width (mm)
--------	-------------	------------

348-220025	2200	0250
348-220040	2200	0400
348-220080	2200	0800
348-220100	2200	1000

### PLASTIC PANEL (Height 1100 mm)

Art.no	Height (mm)	Width (mm)
--------	-------------	------------

348-110025	1100	0250
348-110040	1100	0400
348-110080	1100	0800
348-110100	1100	1000

## Product Facts » X-Store

### POSTS

Art.no	Gap to floor (mm)	Height (mm)
--------	-------------------	-------------

#### 50x50 mm foot included, Graphite Black RAL 9011

P3101-230	100	2300
-----------	-----	------

#### 70x70 mm foot included, Graphite Black RAL 9011

P3301-230	100	2300
-----------	-----	------

#### 1 Extension 50 x 50 mm, Graphite Black RAL 9011

E3101-075	0750
E3101-075B (above sliding door)	0750
E3101-110	1100
E3101-110B (above sliding door)	1100
E3101-220	2200
E3101-220B (above sliding door)	2200

#### 2 Extension 70 x 70 mm, Graphite Black RAL 9011

E3301-075	0750
E3301-110	1100
E3301-220	2200

#### Extension 50 x 50 mm, Special colour

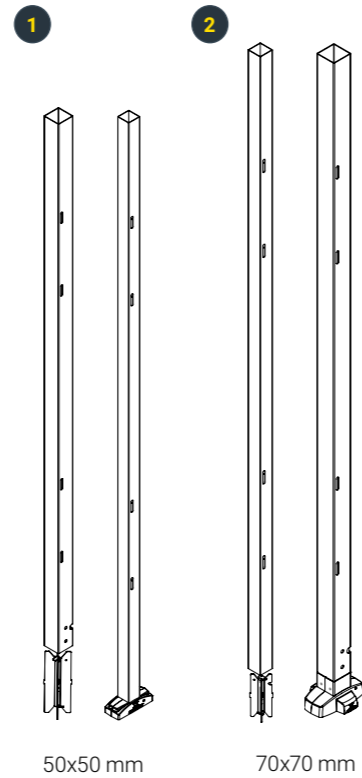
E5101-075	0750
E5101-075B (above sliding door)	0750

#### Extension 70 x 70 mm, Special colour

E5301-075	0750
-----------	------

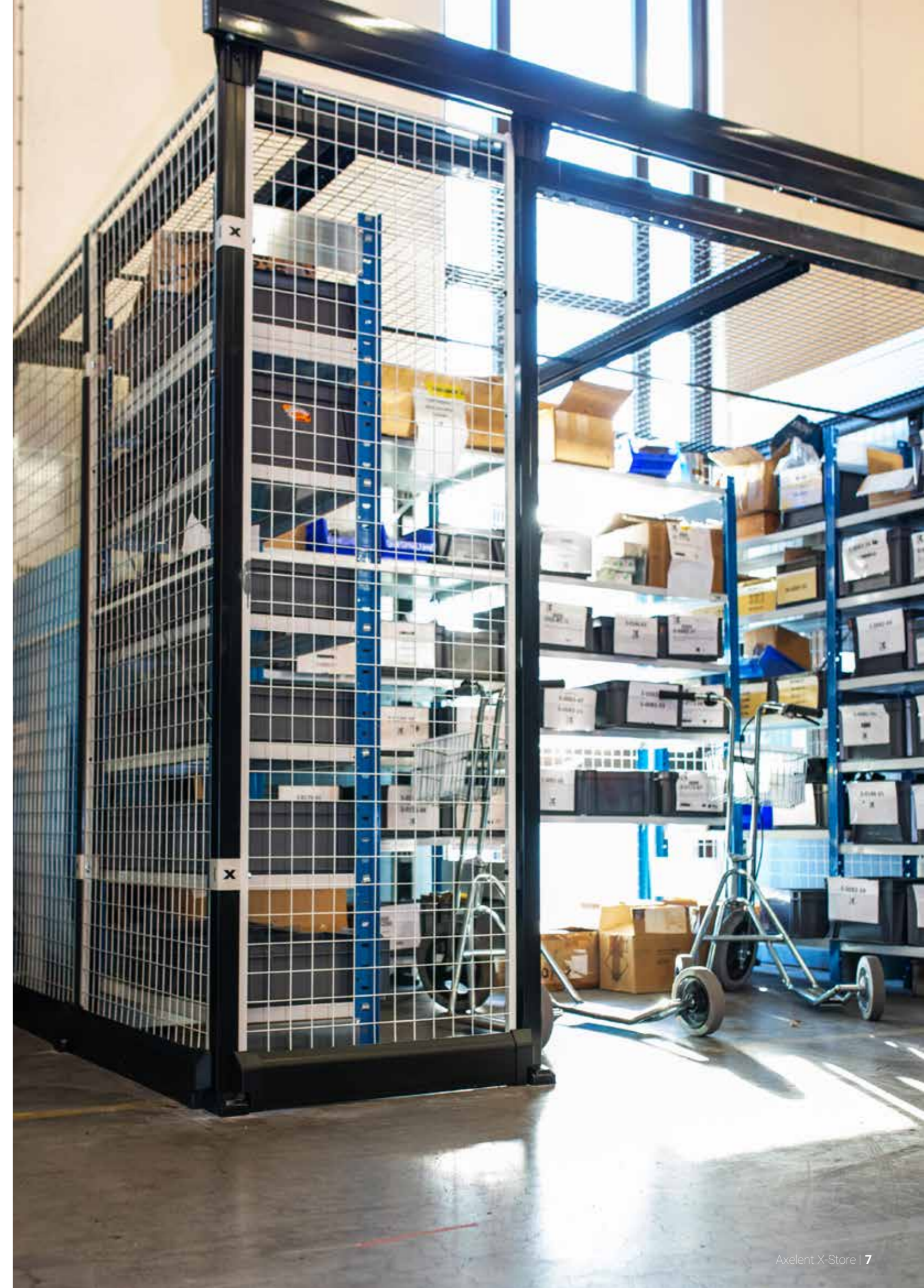
#### 3 Floor support, Graphite Black RAL 9011

P3101-082	100	825
-----------	-----	-----



50x50 mm

70x70 mm



## Suitable doors for X-Store » Without ceiling

EXAMPLE OF DOORS SUITABLE TO X-STORE SYSTEM WITHOUT CEILING								
Door	Art.No.	Height cage/door 2300/2300 mm	Height cage/door 3055/2300 mm	Height cage/door 3055/3055 mm	Height cage/door 3400/2300 mm	Height cage/door 3400/3400 mm <sup>B</sup>	Height cage/door 4500/2300 mm	Height cage/door 4500/4500 mm <sup>B</sup>
①	D10/DP10-XXX150	✓		✓		3 widths <sup>A</sup>		✓
①	D11/DP11-XXX150	✓	✓		✓		✓	
②	D12/DP12-230300	✓		✓				
⑩	D13-XXX249	✓		✓				
⑩	D13-XXX565	✓		✓				
③	D20-XXX100	✓	✓	✓	✓	3 widths <sup>A</sup>	✓	✓
③	D20-XXX140	✓	✓	✓	✓	3 widths <sup>A</sup>	✓	✓
③	D20/DP20-XXX220	✓	✓	✓	✓	3 widths <sup>A</sup>	✓	✓
③	D20/DP20-XXX310	✓	✓	✓	✓	3 widths <sup>A</sup>	✓	✓
③	D20-XXX570	✓	✓	✓	✓	3 widths <sup>A</sup>	✓	✓
④	D22-XXX290	✓	✓	✓	✓	3 widths <sup>A</sup>	✓	✓
④	D22-XXX590	✓	✓	✓	✓	3 widths <sup>A</sup>	✓	✓
⑤	D23-XXX300	✓						
⑥	D23-XXX450	✓						
⑦	D24/DP24-230140, -230290	✓						
①	D30/DP30-XXX150	✓			✓ <sup>C</sup>	3 widths <sup>A</sup>	✓ <sup>C</sup>	✓
②	D32-230300	✓						
③	D40-XXX100	✓	✓	✓	✓	3 widths <sup>A</sup>	✓	✓
③	D40-XXX140	✓	✓	✓	✓	3 widths <sup>A</sup>	✓	✓
③	D40/DP40-XXX220	✓	✓	✓	✓	3 widths <sup>A</sup>	✓	✓
③	D40-XXX310	✓	✓	✓	✓	3 widths <sup>A</sup>	✓	✓
③	D40-XXX570	✓	✓	✓	✓	3 widths <sup>A</sup>	✓	✓
④	D42/DP42-XXX290	✓	✓	✓	✓	3 widths <sup>A</sup>	✓	✓
④	D42/DP42-XXX590	✓	✓	✓	✓	3 widths <sup>A</sup>	✓	✓
⑤	D43-XXX300	✓						
⑥	D43-XXX450	✓						
⑦	D44-230140, -230290	✓						
⑧	D56/DP56-XXX200	✓		✓				
⑨	D57/DP57-XXX400	✓		✓				

A Only door panels in the widths 800 mm, 1000 mm & 1500 mm are selectable C Replaced by D11-XXX150

B Article number ends with -B

DP = Fits with plastics and sheet metal

## Suitable doors for X-Store » With ceiling

EXAMPLE OF DOORS SUITABLE TO X-STORE SYSTEM WITH CEILING								
Door	Art.No.	Height cage/door 2300/2300 mm	Height cage/door 3055/2300 mm	Height cage/door 3055/3055 mm	Height cage/door 3400/2300 mm	Height cage/door 3400/3400 mm <sup>B</sup>	Height cage/door 4500/2300 mm	Height cage/door 4500/4500 mm <sup>B</sup>
①	D10-XXX150	✓						
①	D11-XXX150	✓	✓	✓	✓	3 widths <sup>A</sup>	✓	✓
②	D12-230300	✓		✓				
⑩	D13-XXX249	✓		✓				
⑩	D13-XXX565	✓		✓				
③	D20-XXX100	✓	✓	✓	✓	3 widths <sup>A</sup>	✓	✓
③	D20-XXX140	✓	✓	✓	✓	3 widths <sup>A</sup>	✓	✓
③	D20-XXX220	✓	✓	✓	✓	3 widths <sup>A</sup>	✓	✓
③	D20-XXX310 <sup>D</sup>	✓	✓	✓	✓	3 widths <sup>A</sup>	✓	✓
③	D20-XXX570	✓	✓	✓	✓	3 widths <sup>A</sup>	✓	✓
④	D22-XXX290 <sup>D</sup>	✓	✓	✓	✓	3 widths <sup>A</sup>	✓	✓
④	D22-XXX590 <sup>D</sup>	✓	✓	✓	✓	3 widths <sup>A</sup>	✓	✓
⑤	D23-XXX300	✓						
⑥	D23-XXX450	✓						
⑦	D24-230140, -230290 <sup>D</sup>	✓						
①	D30-XXX150 <sup>C</sup>	✓		✓	✓	3 widths <sup>A</sup>	✓	✓
②	D32-230300	✓		✓				
③	D40-XXX100	✓	✓	✓	✓	3 widths <sup>A</sup>	✓	✓
③	D40-XXX140	✓	✓	✓	✓	3 widths <sup>A</sup>	✓	✓
③	D40-XXX220	✓	✓	✓	✓	3 widths <sup>A</sup>	✓	✓
③	D40-XXX310 <sup>D</sup>	✓	✓	✓	✓	3 widths <sup>A</sup>	✓	✓
③	D40-XXX570	✓	✓	✓	✓	3 widths <sup>A</sup>	✓	✓
④	D42-XXX290	✓	✓	✓	✓	3 widths <sup>A</sup>	✓	✓
④	D42-XXX590 <sup>D</sup>	✓	✓	✓	✓	3 widths <sup>A</sup>	✓	✓
⑤	D43-XXX300	✓						
⑥	D43-XXX450	✓						
⑦	D44-230140, -230290 <sup>D</sup>	✓						
⑧	D56-XXX200	✓		✓				
⑨	D57-XXX400	✓		✓				

A Only door panels in the widths 800 mm, 1000 mm & 1500 mm are selectable C Replaced by D11-XXX150

B Article number ends with -B

D Max. opening 3000 mm

## Wide range of doors

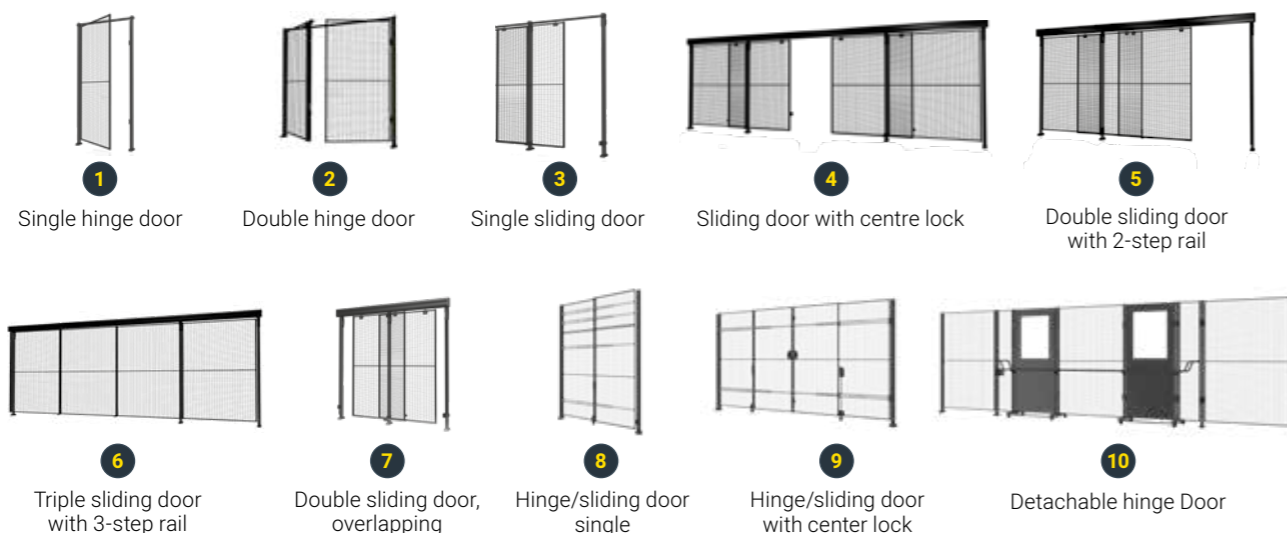
The wide range of locks and doors for the X-Store system are based on the same range as for Axelent X-Guard. Have a look at the guide above to see examples of which doors that are suitable for your desired X-Store system. For the complete selection of doors, see [axelent.com](http://axelent.com) » Warehouse » X-Store

The X-Store door package gives you easy and secure access to the enclosure.



**When drawing your project in SnapperWorks the program automatically picks matching doors.**

Curious about SnapperWorks? The program is developed by Axelent and completely free of charge. Contact your local sales office for more information. » [www.axelent.com](http://www.axelent.com)



**ACCESSORIES**

Art.no	Width (mm)	Height (mm)
--------	------------	-------------

**1 Adjustable infill, Light grey RAL 9018**

T07-4-07511	117	750
T07-4-07531	317	750
T07-4-11011	117	1100
T07-4-11031	317	1100
T07-4-22011	117	2200
T07-4-22031	317	2200

**1 Adjustable infill, Special colour**

T07-5-07511	117	750
T07-5-07531	317	750

**2 Corner brackets 90°, 3 pcs**

95001		
-------	--	--

**3 Hinge, 0-90°, 2 pcs (bolt/bolt)**

B10-3B		
--------	--	--

**Cutting kit, Papyrus White RAL 9018**

KHX-4-150	1500	Horizontal
KVX-4-075	Vertically	0750
KVX-4-110	Vertically	1100
KVX-4-220	Vertically	2200

**Cutting kit, Special colour**

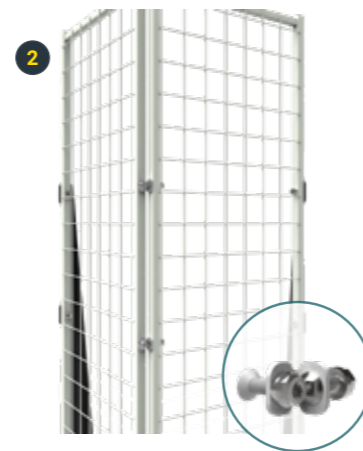
KVX-5-075	Vertically	0750
KVX-5-110	Vertically	1100
KVX-5-220	Vertically	2200

**4 Kit, kickplate with end brackets**

Art.no.	Description
T08-3-100	Kickplate (Plastic), H = 100 mm, L = 1000 mm, RAL 9011
T08-3-150	Kickplate (Plastic), H = 100 mm, L = 1500 mm, RAL 9011
T08-3-100RE	Kickplate (Plastic), H = 100 mm, L = 1000 mm, RAL 9011 (reinforced)
T08-3-150RE	Kickplate (Plastic), H = 100 mm, L = 1500 mm, RAL 9011 (reinforced)
B00-057	Kit, inner corner bracket for plastic kickboard

**5 Bracket for mounting X-Store panel to X-Guard post (door post)**

T00-07	Panel brackets with bolt, (1pack=4pcs), X-Guard
--------	---



**ACCESSORIES**

Kind	Description
------	-------------

**1 X-It**

XIT-L01-101	X-It Cylinder lock, hinge door, LH
XIT-L01-301	X-It Cylinder lock, sliding door, left
XIT-L01-401	X-It Cylinder lock, sliding door with center lock, LH
XIT-R01-101	X-It Cylinder lock, hinge door, RH
XIT-R01-301	X-It Cylinder lock, sliding door, RH
XIT-R01-401	X-It Cylinder lock, sliding door with center lock, RH

XIT-L14-101	X-It "Slam Shut", esc.rel.function, hinge door, LH
XIT-L14-301	X-It "Slam Shut", esc.rel.function, sliding door, LH
XIT-L14-401	X-It "Slam Shut", esc.rel.function, sliding door center lock, LH
XIT-R14-101	X-It "Slam Shut", escape release function, hinge door, RH
XIT-R14-301	X-It "Slam Shut", escape release function, sliding door, RH
XIT-R14-401	X-It "Slam Shut", esc.rel.function, sliding door center lock, RH

XIT-L09-101	X-It Electric, esc.rel.function, hinge door, LH
XIT-L09-301	X-It Electric, esc.rel.function, sliding door, LH
XIT-L09-401	X-It "Slam Shut", esc.rel.function, sliding door center lock, LH
XIT-R09-101	X-It Electric, esc.rel.function, hinge door, RH
XIT-R09-301	X-It Electric, esc.rel.function, sliding door, RH
XIT-R09-401	X-It Electric, esc.rel.function, sliding door center lock, RH

**2 Padlock brackets**

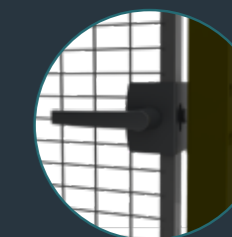
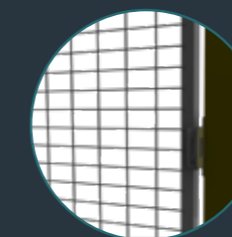
L10-00-0	Padlock brackets for hinge door, right/left
L20-00-0	Padlock brackets for sliding door, right/left
L22-00-0	Padlock brackets for sliding door with centre lock

**3 Bail handle**

T01-22	Bail handle c/c 150mm, set of 2 incl. mounting plates
--------	---

**4 Snap lock**

L10-05-0	Snap lock for hinge door, right/left
L20-05-0	Snap lock for sliding door, right/left
L22-05-0	Snap lock for sliding door with centre lock



**1 X-It**

Axelent X-It is a patent-pending, ingenious cylinder lock with a unique design that requires no extra case.

**2 Padlock brackets**

Our most simple lock system. A normal hinge lock secure the area from being entered by unauthorized.

**3 Bail handle**

The shackle handle is supplied as a set of 2 pieces and an attachment.

**4 Snap lock**

The door closes with a simple push and is kept closed by the built-in catch.



Axelent **X-Store**



**AXELEN'T · AXELEN'T ENGINEERING · AXELEN'T SOLUTIONS · AXELEN'T SAFE-X**  
 AXELEN'T AB · BOX 1 · KÄVSJÖVÄGEN 17 · 335 04 HILLERSTORP, SWEDEN  
 0370-37 37 30 · SALES@AXELEN'T.SE · WWW.AXELEN'T.SE

